

Fact Sheet



The spacious Waldhotel Pradaschier (*wald* means wood and *Pradaschier* is the locality) is very suitable for hosting events of one or more days for about 60 persons, also during the corona pandemic period. It was erected in 1899 and is a listed building.

Accommodation and Rooms

There is a total of 52 beds in 19 rooms spread over three floors.

The freshly renovated showers and toilets are situated on the first three floors. In addition, there are washrooms with four basins in each, on the second and third floors.

Rooms	2. Floor	3. Floor	Total
Single	3	1	4
Double	6	2	8
Three-		2	2
Four-	1		1
Five-	1	1	2
Six-bedroom		2	2
Beds	24	25	52

Extra mattresses are available for the family rooms. A child's bed is also available.

Bed Linen

All the beds are equipped with duvets and pillows. Fitted sheets as well as duvet covers, and pillowcases are provided according to offer.

Private Rooms

When not rented out, the building is used by the Ganden Chokhor association as a Tibetan-Buddhist Meditation Centre. Certain rooms, other than those listed here, are for the use of the association and its members only. We ask our guests to kindly respect this.

Arrivals

Address and Coordinates

Waldhotel Pradaschier
Pradaschier 20
7075 Churwalden GR
Switzerland

Telefon: +41 76 533 53 57
Email: info@waldhotel-pradaschier.ch

Coordinates: 2'759'916.6, 1'183'750.1
46°47'08.9"N 9°31'59.8"E

Altitude: 1346m

Arrival by Public Transport

From the train station in Chur, it takes 15 minutes by bus to reach the bus stop 'Furnerschus'. Good walking shoes are required for the 20-minute uphill walk to the Waldhotel.

If a taxi service is required at other times, we recommend:

Taxi Rothorn, Lenzerheide: 081 384 13 17

Arrival by Private Transport

The Waldhotel is connected to the main road by an unpaved road through the woods and is open all year. The road is cleared by snow plough in winter. However, depending on the weather, a four-wheel drive vehicle and the application of snow chains, is strongly recommended. Vehicles weighing more than 2 tons may find the ascent difficult. Heavy vehicles and trailers are not permitted by the municipality.

The municipality of Churwalden levy a road tax on the unpaved road. Tickets for single trips per car (CHF 10), for weekends (CHF 20) or weekly use (CHF 40) can be directly ordered at the municipality.

Municipality Churwalden, +41 81 382 00 11

Parking

There are 8 parking places within the grounds of the Waldhotel for CHF 8 per day. In the valley there is an ample number of parking places made available by the municipality that can be rented for CHF 5 per day.

Kitchen



Our professional kitchen has a serving capacity for 40 – 70 guests and is equipped as follows:

- Professional ceramic cooktop with 4 cooking zones
- Large professional combi-steamer/oven with all the accessories (Salvis)
- Brunner-Anliker vegetable cutter
- Two large fridges, ca. 360 Litre each
- large freezer, ca. 360 Litre
- Gastro dishwasher (Meiko)
- 2 worktables
- 2 large sinks
- 1 hand basin
- kitchen linen and detergent

The existing supply of standard herbs and spices may be used for a flat rate. A separate fridge for cold drinks is available if necessary.

Please note that the officially decreed hygiene regulations are to be followed when using the kitchen.

Lists of local suppliers for milk and cheese products, meat and bakery products are available.

Communal Rooms

A maximum of 80 persons may be seated in the **dining room (81 m²)**. The room has fine acoustics and is therefore suitable for concerts.

- Banquet capacity: ca. 70 seats
- Seminar capacity: 25 in Winter, 40 seats in Summer

There are 3 buffet tables and 14 tavern tables seating 6 persons each with matching classical, Horgan Glarus chairs. There are also two highchairs for children. Dishes, water glasses, red and white wine glasses as well as cutlery for 70 persons are provided.

In the dining room you will find tea/coffee facilities with a Nespresso machine and a water boiler.

The **sun terrace (17 m²)** facing south is situated in front of the dining room. It is equipped with benches, little tables and sun umbrellas and offers beautiful views across the valley to the mountains beyond.

Seminar Rooms

The unheated **sun veranda (27 m²)** with single glazed windows bordering the dining room on one side, enjoys morning sun thanks to its south-eastern position. It is furnished with 7 tables and chairs and can seat up to 30 persons. The classical tavern furniture can be easily moved so as to convert the room into a working space for smaller groups. If empty, the room can be used as a space for yoga.

The heated **forest veranda (18 m²)** with single glazed windows has a large, round wooden table and chairs and is suitable as a meeting room for groups of up to 6 persons.

In the **red salon (27 m²)** a stove with armchairs and sofas is an invitation to enjoy leisurely togetherness. There is also an extendable table that seats 10 persons.

Facing south is the unheated **green veranda (17 m²)** with single glazed windows furnished with two sofas and a round, wooden table. It can function as

a workroom for about 6 persons. Here you will also find children's books and board games.

Meditation Room

The **meditation room (incl. platform, approx. 80 m²)**, painted and decorated in the Tibetan Buddhist tradition, is equipped with meditation mats and cushions for up to 70 persons. The beautiful parquet floor is heated, and the room is equipped with an acoustic amplification system. It is available for use only by prior agreement.

With yoga mats 15 – 25 and with meditation mats 50 -60 persons find space for sessions.

Surroundings

Besides the wooded surroundings, which has given the name to our premises, the large gravelled entrance area, the gravelled area facing north, and the lower lawn area (*Waldwiesli* = little wooded meadow) are all available for outdoor activities. For evening activities, there is a fire bowl with a grill grate on the lower Waldwiesli lawn. Firewood can be provided.

The Buddhist stupa in the back garden is an invitation to practice meditative circumambulation, traditionally in clockwise direction.

For outdoor festivities, there are 8 metal tables and 40 garden chairs as well as 8 fixed bench sets seating a total of 64 persons. Sun umbrellas are available in summer as necessary.

Technicalities

Strict Smoke and Fire Ban

For security reasons, any kind of open flame is forbidden throughout the entire building of the

Waldhotel. The hotel is equipped with a highly sensitive fire alarm, the details of which we will give you when handing over the house. Even the use of the stove is permitted only by prior agreement, and by following all the security measures.

For security reasons, fire is permitted in the grounds of the hotel in the designated areas only. Any other open flames (e.g., torches) are permitted by prior agreement only, and at a distance of 10 metres from the house. Smoking is not permitted on the balconies.

Equipment

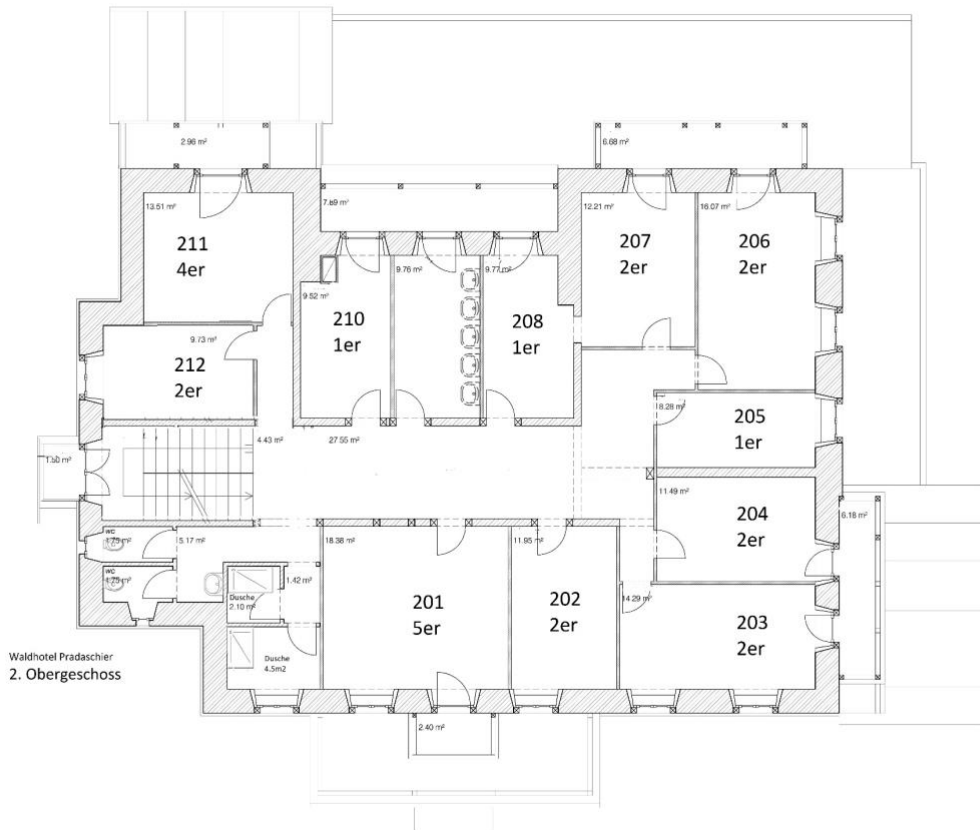
Two flipchart walls and beamer, as well as screen are available for rent for a daily flat rate. Flipchart paper and moderation materials must be organized by the user.

400V connections are installed in the dining room, in the kitchen and close to the side entrance.

Internet

Internet connection is possible via several LAN switches distributed throughout the house. The WLAN access point can be used if needed. However, it is only suitable for occasional e-mail activities, and not for intensive uploads or downloads of data. The connection is also slowed down by too many parallel users. However, all the major Swiss mobile companies offer good coverage here. (as of 01/2023).

The water supply comes directly from a source in the hamlet of Padaschier. As a result, you can enjoy the luxury of fresh spring water directly from the taps in the Waldhaus.



Ground plan of the basement

Site Plan

